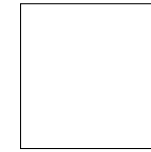


Les Baux de Provence

30x30 15x30 15x15



30x30 . 12"x12"



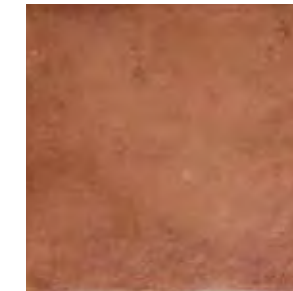
15x30 . 6"x12"



15x15 . 6"x6"



HCP 11



HCP 6

Gres porcellanato a tutta massa
Through-body porcelain tile
Durchgefärbtes Feinsteinzeug
Le grès cérame pleine masse
Gruppo B1a UNI EN 14411_G



LOW



10 mm



UN EN ISO 10545.12:
RESISTANT





UNI EN ISO 10545.13: **GA**
UNI EN ISO 10545.14: **5**



DIN 51130: **R11**
DIN 51097: **A**
ANSI A 137.1 (DCOF): **≥0,42**
BCRA: **>0,40**



Sizes	Pieces					
		Mq.	Kg.	Boxes	Mq.	Kg.
30x30	12	1,08	24,00	44	47,52	1077,00
15x30	24	1,08	24,00	44	47,52	1077,00
15x15	48	1,08	24,00	48	51,84	1173,00
14,5x30 fascia provence	6	-	-	-	-	-
6x6 provence a	55	-	-	-	-	-
8x30 battiscopa	26	7,80 ml.	-	-	-	-
30x33 gradone lineare monolitico	6	-	-	-	-	-
33x33 gradone angolare monolitico	4	-	-	-	-	-
16,5x30 elemento a L monolitico	8	2,40 ml.	-	-	-	-

Les Baux de Provence

30x30 15x30 15x15



30x30 . 12"x12"
G3CP11 HCP 11
□ 054



15x30 . 6"x12"
G2CP11 HCP 11
□ 056



15x15 . 6"x6"
G1CP11 HCP 11
□ 056



30x30 . 12"x12"
G3CP06 HCP 6
□ 054



15x30 . 6"x12"
G2CP06 HCP 6
□ 056



15x15 . 6"x6"
G1CP06 HCP 6
□ 056



14,5x30 . 5³/₄"x12"
G3CPFL
□ 032



6x6 . 2³/₈"x2³/₈"
G3CPPRT06 Provence A
□ 005

- 12 Soggetti assortiti
- 12 Different designs
- 12 Motive sortiert
- 12 Sujets assortis



14,5x30 . 5³/₄"x12"
G3CPFL
□ 032



6x6 . 2³/₈"x2³/₈"
G3CPPRT06 Provence A
□ 005

- 12 Soggetti assortiti
- 12 Different designs
- 12 Motive sortiert
- 12 Sujets assortis

Cotto Effect

Cotto Effect

PEZZI SPECIALI • SPECIAL PIECES • FORMTEILE • PIÈCES SPÉCIALES



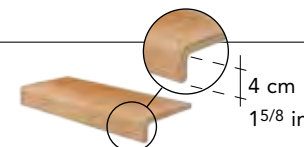
8x30 . 3¹/₈"x12"
BATTISCOPA
G0CP11 HCP 11
■ 019



30x33 . 12"x13"
GRADONE LINEARE MONOLITICO
G3CP11G HCP 11
□ 059



33x33 . 13"x13"
GRADONE ANGOLARE MONOLITICO
G3CP11GA HCP 11
□ 085



16,5x30 . 6¹/₂"x12"
ELEMENTO A L MONOLITICO
G3CP11ELM HCP 11
■ 075



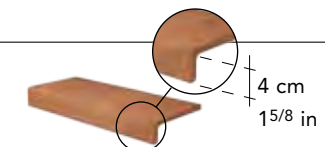
8x30 . 3¹/₈"x12"
BATTISCOPA
G0CP06 HCP 6
■ 019



30x33 . 12"x13"
GRADONE LINEARE MONOLITICO
G3CP06G HCP 6
□ 059



33x33 . 13"x13"
GRADONE ANGOLARE MONOLITICO
G3CP06GA HCP 6
□ 085



16,5x30 . 6¹/₂"x12"
ELEMENTO A L MONOLITICO
G3CP06ELM HCP 6
■ 075